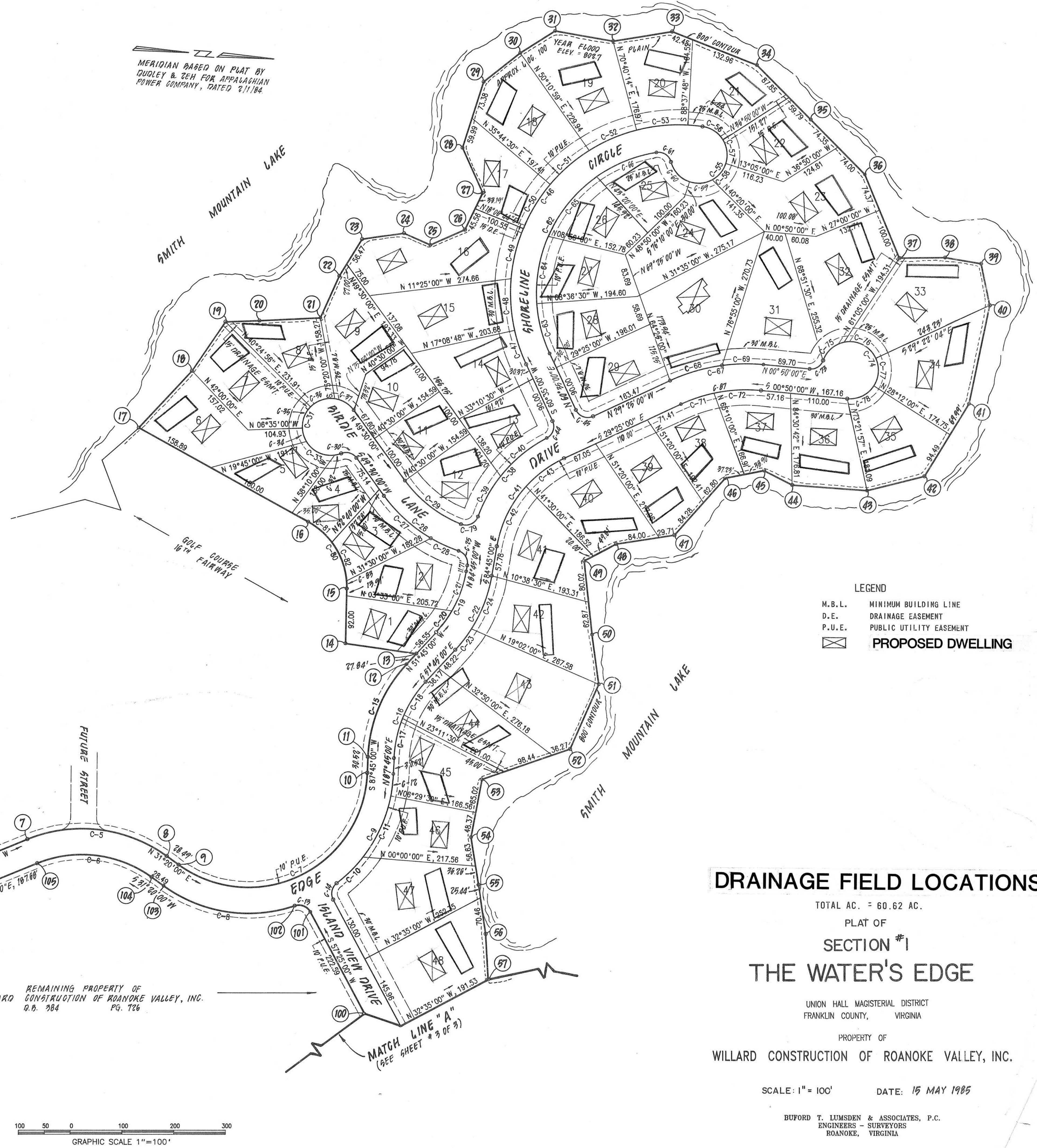


CURVE TABLE					CURVE TABLE						
NAME	ANGLE	RADIUS	LENGTH	BEARING	CHORD	NAME	ANGLE	RADIUS	LENGTH	BEARING	CHORD
C-1	08°17'29"	400.00	57.88	N 19°23'44" W	57.88	C-46	123°00'00"	325.00	697.70	N 57°55'00" W	571.23
C-2	08°17'29"	350.00	50.65	N 19°23'44" W	50.61	C-47	12°16'12"	325.00	69.60	S 66°43'06" W	69.47
C-3	11°20'00"	350.00	69.23	N 20°55'00" W	69.12	C-48	17°37'46"	325.00	100.00	S 81°40'05" W	99.61
C-4	11°20'00"	400.00	79.12	N 20°55'00" W	78.99	C-49	17°37'46"	325.00	100.00	N 80°42'09" W	99.61
C-5	57°55'00"	280.00	283.03	N 02°22'30" E	271.14	C-50	17°37'46"	325.00	100.00	N 63°04'23" W	99.61
C-6	57°55'00"	230.00	232.49	N 02°22'30" E	222.72	C-51	17°37'46"	325.00	100.00	N 45°26'37" W	99.61
C-7	123°35'00"	230.00	496.10	N 30°27'30" W	405.37	C-52	17°37'46"	325.00	100.00	N 27°48'51" W	99.61
C-8	54°28'53"	280.00	286.25	N 04°05'34" E	256.33	C-53	17°37'46"	325.00	100.00	N 10°11'05" W	99.61
C-9	50°13'53"	280.00	245.48	N 67°08'03" W	237.69	C-54	04°57'12"	325.00	28.10	N 01°06'28" E	28.09
C-10	14°42'17"	280.00	71.86	N 49°22'18" W	71.86	C-55	247°06'53"	55.00	237.21	N 52°51'34" W	91.67
C-11	26°47'06"	280.00	130.90	N 70°06'57" W	129.71	C-56	49°35'00"	55.00	47.60	N 28°22'30" E	46.13
C-12	08°44'30"	280.00	42.72	N 87°52'45" W	42.68	C-57	49°55'00"	55.00	47.92	N 78°07'30" E	46.42
C-13	80°33'53"	25.00	35.15	N 17°08'03" E	32.33	C-58	43°29'25"	55.00	41.75	N 55°10'17" W	40.75
C-14	80°33'53"	25.00	35.15	N 82°18'04" W	32.33	C-59	47°15'35"	55.00	45.36	N 09°47'47" W	44.09
C-15	40°30'00"	280.00	197.92	N 72°00'00" W	193.83	C-60	56°51'53"	55.00	54.58	N 42°15'56" E	52.37
C-16	40°30'00"	230.00	162.58	N 72°00'00" W	159.21	C-61	84°15'39"	25.00	36.77	N 28°34'03" E	33.54
C-17	19°37'18"	230.00	78.77	N 82°26'21" W	78.38	C-62	105°51'13"	275.00	508.06	N 66°29'23" W	438.83
C-18	20°52'42"	230.00	83.81	N 62°11'21" W	83.35	C-63	20°48'31"	275.00	99.87	S 70°59'16" W	99.33
C-19	33°00'00"	230.00	132.47	N 68°15'00" W	130.65	C-64	27°43'13"	275.00	133.05	N 84°44'52" W	131.75
C-20	12°42'04"	230.00	50.99	N 58°06'00" W	50.88	C-65	31°15'20"	275.00	150.02	N 55°15'36" W	148.16
C-21	20°17'58"	230.00	81.48	N 74°38'02" W	81.08	C-66	26°04'09"	275.00	125.12	N 26°35'51" W	124.05
C-22	33°00'00"	280.00	161.27	N 68°15'00" W	159.05	C-67	30°15'00"	350.00	184.79	N 14°17'30" W	182.65
C-23	10°29'34"	280.00	51.28	N 56°59'47" W	51.21	C-68	17°11'30"	350.00	105.02	N 20°49'15" W	104.82
C-24	22°30'26"	280.00	109.99	N 73°29'47" W	109.28	C-69	13°03'30"	350.00	79.77	N 05°41'45" W	79.60
C-25	81°00'29"	25.00	35.35	N 54°44'46" W	32.48	C-70	12°50'07"	300.00	67.21	N 22°59'56" W	67.07
C-26	35°15'29"	294.91	181.48	N 31°52'16" E	178.63	C-71	17°24'53"	300.00	91.18	N 07°52'26" W	90.83
C-27	23°48'04"	294.91	122.51	N 37°35'58" W	121.63	C-72	75°31'21"	25.00	32.95	N 36°55'40" W	30.62
C-28	11°27'25"	294.91	58.97	N 19°58'13" E	58.87	C-73	255°31'21"	55.00	245.29	N 53°04'20" E	86.96
C-29	32°25'33"	244.91	138.60	N 33°17'14" W	136.76	C-74	58°16'20"	55.00	55.94	N 45°33'11" W	53.56
C-30	75°31'21"	25.00	32.95	N 11°44'20" E	30.62	C-75	77°04'24"	55.00	73.99	N 22°07'10" E	68.53
C-31	255°31'21"	55.00	245.28	N 78°15'40" W	86.96	C-76	57°32'37"	55.00	55.24	N 89°25'41" E	52.95
C-32	13°48'49"	55.00	13.26	N 19°06'56" W	13.23	C-77	62°38'00"	55.00	60.12	N 30°29'00" W	57.17
C-33	66°59'05"	55.00	64.30	N 21°17'00" E	60.70	C-78	91°29'57"	25.00	39.92	N 28°40'31" W	35.81
C-34	28°38'07"	55.00	27.49	N 09°05'47" E	27.21	C-79	61°50'00"	145.00	156.48	N 55°25'00" E	149.00
C-35	48°58'55"	55.00	45.12	N 73°05'00" W	43.88	C-80	24°17'43"	145.00	61.49	N 36°38'52" E	61.03
C-36	53°28'47"	55.00	51.34	N 22°50'42" W	49.49	C-81	31°45'05"	145.00	80.35	N 64°40'16" E	79.33
C-37	45°36'18"	55.00	43.77	N 26°41'51" E	42.63	C-82	05°47'12"	145.00	14.84	N 83°26'24" W	14.64
C-38	42°11'21"	280.00	206.18	N 53°19'49" W	201.55	C-83	05°05'22"	1115.00	99.04	S 57°31'39" W	99.01
C-39	18°24'19"	280.00	89.95	N 65°13'20" W	89.56	C-84	78°31'28"	25.00	34.26	N 15°43'15" E	31.64
C-40	23°47'02"	280.00	116.23	N 44°07'39" W	115.40	C-85	96°23'11"	25.00	42.06	S 71°44'05" E	37.27
C-41	55°20'00"	230.00	222.12	N 57°05'00" W	213.59	C-86	30°15'00"	300.00	158.39	S 14°17'30" E	156.55
C-42	32°28'39"	230.00	130.37	N 68°30'40" W	128.64						
C-43	22°51'21"	230.00	91.75	N 40°50'40" W	91.14						
C-44	87°10'52"	25.00	38.04	N 75°49'34" W	34.47						
C-45	90°00'00"	25.00	39.27	N 15°35'00" E	35.36						

LOT AREA					
LOT	SQUARE FEET	ACREAGE	LOT	SQUARE FEET	ACREAGE
1	15,884	0.36	25	15,331	0.35
2	20,703	0.48	26	15,588	0.36
3	15,546	0.36	27	18,715	0.43
4	15,050	0.35	28	18,542	0.43
5	15,754	0.36	29	21,973	0.50
6	25,831	0.59	30	35,284	0.81
7	24,332	0.56	31	30,521	0.70
8	19,262	0.44	32	33,819	0.78
9	23,366	0.54	33	31,772	0.73
10	15,737	0.36	34	29,669	0.68
11	15,459	0.35	35	23,989	0.55
12	17,859	0.41	36	22,261	0.51
13	17,774	0.41	37	19,577	0.45
14	22,404	0.51	38	20,333	0.47
15	25,220	0.60	39	23,073	0.53
16	53,558	0.77	40	28,202	0.65
17	17,969	0.41	41	25,227	0.58
18	28,350	0.65	42	28,418	0.65
19	29,423	0.68	43	36,911	0.85
20	22,286	0.51	44	24,851	0.57
21	22,104	0.51	45	22,277	0.51
22	20,369	0.47	46	20,604	0.47
23	31,870	0.73	47	35,136	0.81
24	28,505	0.65	48	32,662	0.75

MERIDIAN BASED ON PLAT BY  
DUDLEY & ZEH FOR APPALACHIAN  
POWER COMPANY, DATED 2/11/84



**DRAINAGE FIELD LOCATIONS**  
TOTAL AC. = 60.62 AC.  
PLAT OF  
**SECTION #1**  
**THE WATER'S EDGE**

UNION HALL MAGISTERIAL DISTRICT  
FRANKLIN COUNTY, VIRGINIA  
PROPERTY OF  
WILLARD CONSTRUCTION OF ROANOKE VALLEY, INC.  
SCALE: 1" = 100' DATE: 15 MAY 1985  
BUFORD T. LUMSDEN & ASSOCIATES, P.C.  
ENGINEERS - SURVEYORS  
ROANOKE, VIRGINIA

