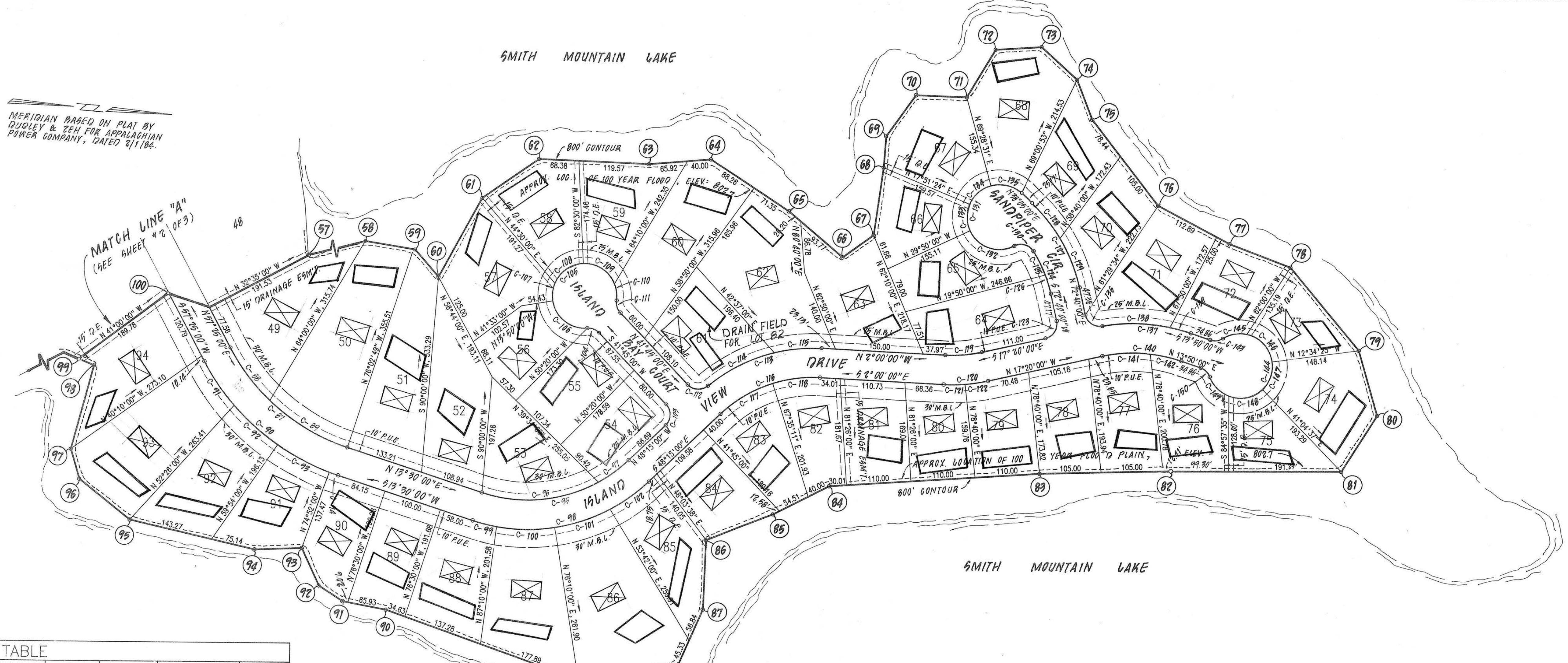


SMITH MOUNTAIN LAKE

MERIDIAN BASED ON PLAT BY
DUDLEY & ZEH FOR APPALACHIAN
POWER COMPANY, DATED 5/1/186.



LOT AREA		
LOT	SQUARE FEET	ACREAGE
49	30,154	0.69
50	40,340	0.71
51	50,978	0.65
52	28,100	0.51
53	22,185	0.41
54	17,671	0.44
55	19,331	0.39
56	16,922	0.57
57	24,924	0.51
58	22,312	0.53
59	22,900	0.73
60	31,747	0.53
61	22,889	0.82
62	35,500	0.61
63	26,412	0.53
64	23,280	0.46
65	20,090	0.40
66	17,264	0.53
67	22,928	0.47
68	29,250	0.46
69	20,599	0.58
70	20,152	0.46
71	25,201	0.46
72	20,185	0.35
73	15,175	0.55
74	23,932	0.38
75	16,677	0.49
76	21,249	0.48
77	20,981	0.44
78	19,234	0.42
79	18,209	0.40
80	17,329	0.44
81	19,287	0.40
82	17,595	0.45
83	19,555	0.45
84	19,523	0.52
85	22,623	0.95
86	41,483	0.69
87	30,100	0.53
88	22,999	0.44
89	19,372	0.47
90	20,566	0.60
91	26,006	0.82
92	25,693	0.58
93	25,270	0.58
94		

NAME	ANGLE	RADIUS	LENGTH	BEARING	CHORD
C-87	43°55'00"	350.00	288.27	N 35°27'30" E	281.75
C-88	18°26'40"	350.00	112.67	N 48°11'40" E	112.19
C-89	25°28'20"	350.00	155.60	N 26°14'10" E	154.32
C-90	43°55'00"	400.00	306.60	N 35°27'30" E	299.15
C-91	12°58'56"	400.00	90.63	N 50°55'32" E	90.44
C-92	14°20'05"	400.00	100.07	N 37°16'02" E	99.81
C-93	14°19'39"	400.00	100.02	N 22°56'13" E	99.75
C-94	02°16'28"	400.00	15.87	N 14°38'13" E	15.87
C-95	61°45'00"	250.00	269.49	N 17°22'30" W	256.58
C-96	47°04'28"	250.00	205.40	N 10°02'14" W	199.87
C-97	14°40'32"	250.00	64.03	N 40°54'44" W	63.86
C-98	61°45'00"	300.00	323.32	N 17°22'30" W	307.90
C-99	08°02'00"	300.00	42.06	N 09°29'00" E	42.03
C-100	19°05'55"	300.00	100.00	N 04°04'58" W	99.54
C-101	19°06'05"	300.00	100.01	N 23°10'57" W	99.55
C-102	15°31'00"	300.00	81.25	N 40°29'30" W	81.00
C-103	90°00'00"	25.00	39.27	S 86°45'00" W	35.36
C-104	51°19'04"	25.00	22.39	N 16°05'28" E	21.65
C-105	282°38'08"	55.00	271.31	N 48°15'00" W	66.75
C-106	85°44'04"	55.00	62.30	N 33°17'58" E	74.83
C-107	31°15'27"	55.00	30.01	N 88°11'16" W	29.63
C-108	65°04'33"	55.00	62.47	N 40°02'16" W	59.16
C-109	70°23'02"	55.00	67.56	N 27°41'31" E	63.39
C-110	30°11'02"	55.00	28.97	N 77°58'33" E	28.64
C-111	51°19'04"	25.00	22.39	N 87°24'32" E	21.65
C-112	86°32'55"	25.00	37.76	N 01°31'27" W	34.27
C-113	42°47'55"	280.00	209.15	N 23°23'57" W	204.32
C-114	26°02'22"	280.00	127.25	N 31°46'44" W	126.16
C-115	16°45'33"	280.00	81.90	N 16°22'47" W	81.61
C-116	46°15'00"	230.00	185.66	N 25°07'30" W	180.66
C-117	25°50'11"	230.00	103.71	N 35°19'54" W	102.84
C-118	20°24'49"	230.00	81.95	N 12°12'24" W	81.51
C-119	15°20'00"	235.00	62.89	N 09°40'00" W	62.70
C-120	15°20'00"	285.00	76.27	N 09°40'00" W	76.04
C-121	07°19'27"	285.00	36.43	N 05°39'44" W	36.41
C-122	08°00'33"	285.00	39.84	N 13°19'43" W	39.81
C-123	90°00'00"	25.00	39.27	N 82°20'00" W	35.36
C-124	20°00'28"	225.00	78.57	N 62°39'46" E	78.17
C-125	11°31'18"	225.00	45.24	N 58°25'11" E	45.17
C-126	08°29'12"	225.00	33.33	N 88°25'24" E	33.30
C-127	34°35'00"	275.00	165.99	N 55°22'30" E	163.48
C-128	15°45'13"	275.00	75.61	N 45°57'37" E	75.37
C-129	18°49'47"	275.00	90.38	N 63°15'07" E	89.97

NAME	ANGLE	RADIUS	LENGTH	BEARING	CHORD
C-130	85°18'44"	25.00	37.21	N 10°01'11" E	33.87
C-131	250°42'12"	55.00	240.66	N 87°18'08" W	89.72
C-132	92°47'12"	55.00	89.07	N 13°46'24" E	79.65
C-133	47°41'24"	55.00	45.78	S 84°00'42" W	44.47
C-134	51°37'07"	55.00	49.55	N 46°20'03" W	47.89
C-135	58°36'29"	55.00	56.26	N 08°46'45" E	53.84
C-136	87°56'16"	25.00	38.37	N 28°41'52" E	34.71
C-137	29°08'16"	300.00	152.39	N 08°43'08" W	150.76
C-138	22°05'39"	300.00	115.69	N 04°13'26" W	114.97
C-139	07°00'37"	300.00	36.70	N 10°19'42" E	36.68
C-140	31°10'00"	250.00	135.99	N 01°45'00" W	134.32
C-141	18°41'50"	250.00	81.58	N 07°59'05" W	81.22
C-142	12°28'10"	250.00	54.41	N 07°35'55" E	54.30
C-143	51°19'04"	25.00	22.39	N 11°49'32" W	21.65
C-144	282°38'08"	55.00	271.31	N 76°10'00" W	68.75
C-145	44°21'44"	55.00	42.58	N 15°18'12" W	41.53
C-146	70°32'55"	55.00	67.72	N 42°09'07" E	63.52
C-147	54°00'34"	55.00	51.85	N 75°34'08" W	49.95
C-148	64°13'01"	55.00	61.64	N 16°27'21" W	58.47
C-149	49°29'55"	55.00	47.52	N 40°24'07" E	46.05
C-150	51°19'04"	25.00	22.39	N 39°29'32" E	21.65

BOUNDARY DATA			BOUNDARY DATA		
CORNER	BEARING	DISTANCE	CORNER	BEARING	DISTANCE
13-14	S 03° 33' 00" W	137.81'	57-58	N 18° 41' 50" W	98.79'
14-15	S 86° 52' 00" W	105.88'	58-59	N 04° 39' 31" E	86.02'
15-16	CURVE C-80		59-60	N 44° 21' 01" E	61.26'
16-17	S 24° 30' 00" W	373.89'	60-61	N 65° 54' 52" W	153.58'
17-18	N 51° 16' 33" W	150.22'	61-62	N 39° 16' 40" W	117.08'
18-19	N 60° 05' 08" W	114.54'	62-63	N 02° 22' 46" W	187.95'
19-20	N 06° 24' 58" W	65.68'	63-64	N 09° 22' 32" W	105.92'
20-21	N 07° 08' 22" W	117.75'	64-65	N 28° 35' 38" E	159.61'
21-22	N 70° 05' 51" W	86.71'	65-66	N 35° 17' 37" E	119.97'
22-23	N 62° 37' 52" W	83.47'	66-67	N 40° 24' 52" W	65.02'
23-24	N 12° 53' 35" W	81.42'	67-68	N 86° 37' 42" W	115.99'
24-25	N 19° 32' 24" E	55.67'	68-69	S 89° 32' 42" W	53.21'
25-26	N 28° 31' 06" W	72.85'	69-70	N 58° 58' 22" W	117.08'
26-27	N 68° 33' 37" W	78.75'	70-71	N 02° 43' 53" W	86.58'
27-28	S 61° 26' 46" W	95.17'	71-72	N 63° 41' 20" W	94.90'
28-29	N 76° 41' 39" W	133.37'	72-73	N 08° 23' 22" W	78.30'
29-30	N 42° 41' 11" W	89.77'	73-74	N 37° 32' 14" E	81.89'
30-31	N 36° 46' 08" W	79.68'	74-75	N 63° 57' 03" E	72.47'
31-32	N 05° 29' 00" W	114.45'	75-76	N 47° 16' 13" E	183.44'
32-33	N 13° 47' 30" W	115.41'	76-77	N 23° 00' 07" E	137.89'
33-34	N 17° 00' 31" E	175.41'	77-78	N 15° 49' 31" E	110.72'
34-35	N 40° 46' 02" E	147.63'	78-79	N 45° 20' 26" E	182.41'
35-36	N 40° 46' 16" E	148.35'	79-80	N 68° 25' 05" E	114.89'
36-37	N 63° 06' 36" E	174.37'	80-81	S 61° 59' 59" W	114.15'
37-38	N 05° 09' 23" W	88.42'	81-82	S 05° 07' 06" E	290.59'
38-39	N 05° 06' 56" E	70.69'	82-83	S 06° 21' 01" E	222.44'
39-40	N 73° 35' 54" E	81.57'	83-84	S 08° 34' 00" E	360.01'
40-41	S 82° 24' 17" E	193.45'	84-85	S 31° 38' 30" E	107.09'
41-42	S 63° 00' 30" E	165.14'	85-86	S 25° 55' 48" E	122.06'
42-43	S 18° 18' 09" E	114.15'	86-87	N 87° 40' 39" E	118.26'
43-44	S 00° 21' 01" E	144.92'	87-88	S 70° 53' 17" E	102.17'
44-45	S 22° 29' 14" W	61.12'	88-89	S 13° 47' 06" E	172.90'
45-46	S 15° 36' 04" E	76.13'	89-90	S 14° 56' 59" W	349.80'
46-47	S 52° 48' 21" E	147.08'	90-91	S 06° 08' 01" W	74.95'
47-48	S 13° 18' 25" E	113.70'	91-92	S 28° 10' 08" W	48.66'
48-49	S 32° 18' 20" E	69.81'	92-93	S 60° 17' 14" W	69.97'
49-50	N 79° 21' 14" W	142.89'	93-94	S 06° 37' 18" E	80.58'
50-51	N 77° 52' 41" E	96.72'	94-95	S 08° 33' 50" W	218.40'
51-52	S 70° 34' 32" E	136.54'	95-96	S 33° 58' 46" W	110.84'
52-53	S 23° 36' 17" E	179.70'	96-97	S 69° 19' 51" W	52.84'
53-54	S 83° 43' 29" E	113.39'	97-98	N 79° 25' 38" W	147.08'
54-55	N 76° 28' 33" E	92.89'	98-99	S 18° 23' 34" W	28.00'
55-56	N 77° 16' 50" E	95.90'	99-100	N 41° 00' 00" W	189.78'
56-57	N 82° 14' 54" E	87.81'			

LEGEND

- M.B.L. MINIMUM BUILDING LINE
- D.E. DRAINAGE EASEMENT
- P.U.E. PUBLIC UTILITY EASEMENT
- [Symbol] PROPOSED DWELLING

DRAIN FIELD LOCATIONS

TOTAL AC. = 60.62 AC.

PLAT OF
SECTION #1
THE WATER'S EDGE

UNION HALL MAGISTERIAL DISTRICT
FRANKLIN COUNTY, VIRGINIA

PROPERTY OF
WILLARD CONSTRUCTION OF ROANOKE VALLEY, INC.

SCALE: 1"=100' DATE:

BUFORD T. LUMSDEN & ASSOCIATES, P.C.
ENGINEERS - SURVEYORS
ROANOKE, VIRGINIA

