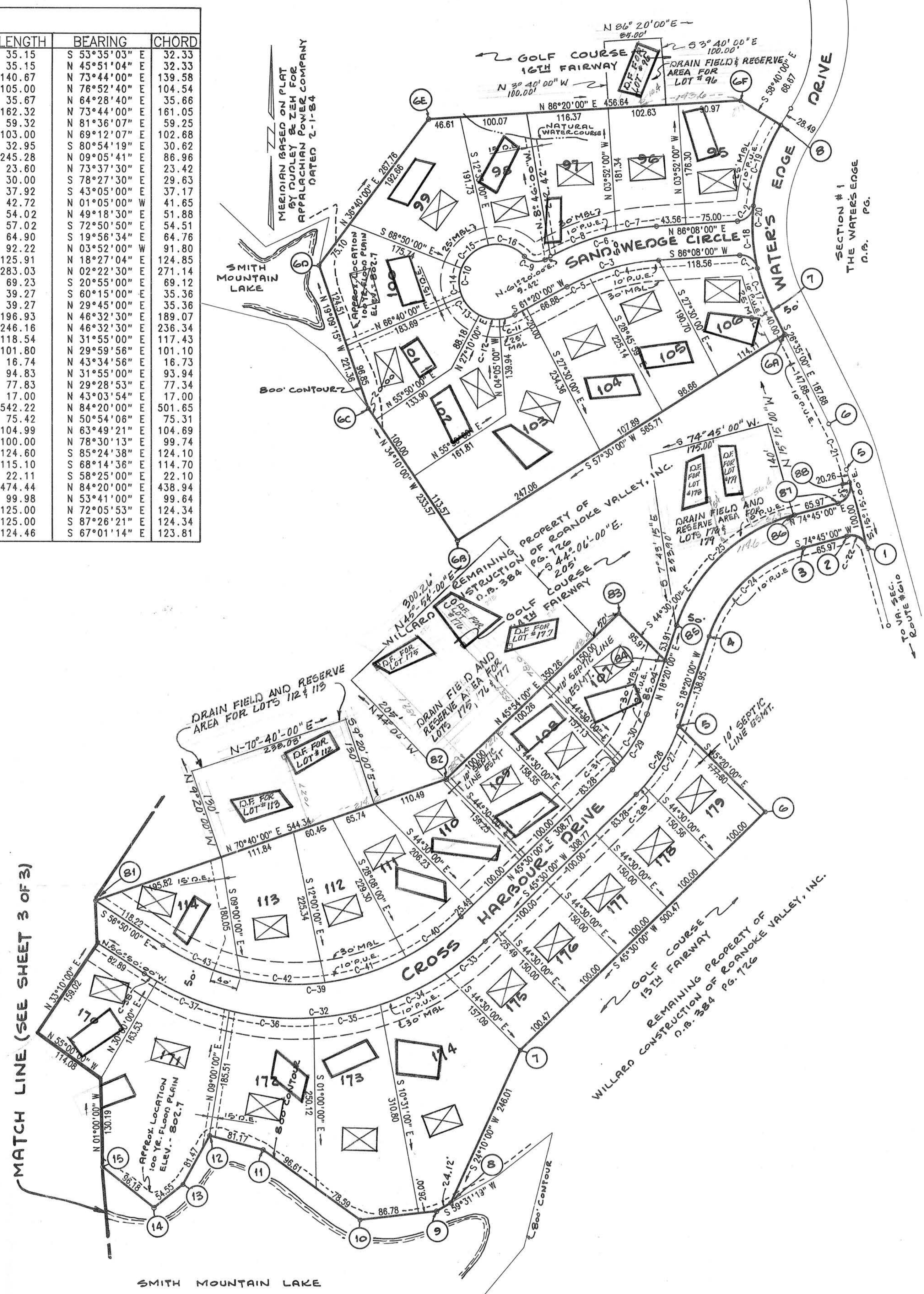


BOUNDARY DATA			
CORNER	BEARING	DISTANCE	
9-10	S 83° 18' 30" W	112.78'	
10-11	N 54° 25' 02" W	175.19'	
11-12	N 75° 18' 55" W	81.17'	
12-13	S 28° 28' 34" W	81.47'	
13-14	S 51° 25' 45" W	54.55'	
14-15	N 51° 43' 42" W	96.18'	
15-16	S 84° 13' 59" W	62.14'	
16-17	S 62° 28' 09" W	74.80'	
17-18	S 10° 12' 20" E	245.40'	
18-19	S 47° 51' 25" W	142.03'	
19-20	S 50° 02' 59" W	170.94'	
20-21	N 71° 04' 20" W	86.25'	
21-22	N 21° 10' 00" W	74.61'	
22-23	N 0° 07' 39" E	139.10'	
23-24	N 21° 49' 43" E	74.21'	
24-25	N 14° 55' 17" W	67.61'	
25-26	N 55° 39' 44" W	43.17'	
26-27	S 42° 44' 12" W	44.74'	
27-28	S 45° 14' 54" W	115.45'	
28-29	S 67° 57' 53" W	126.71'	
29-30	N 66° 07' 30" W	59.67'	
30-31	N 14° 14' 05" W	114.00'	
31-32	N 6° 30' 08" E	137.61'	
32-33	N 53° 38' 38" E	113.07'	
33-34	N 22° 04' 14" E	55.75'	
34-35	N 30° 28' 03" E	77.00'	
35-36	N 1° 50' 48" W	157.24'	
36-37	N 67° 53' 30" E	100.46'	
37-38	N 82° 16' 13" W	182.09'	
38-39	N 22° 42' 40" W	50.88'	
39-40	S 66° 33' 04" W	93.55'	
40-41	S 71° 19' 57" W	187.51'	
41-42	S 79° 54' 47" W	103.33'	
42-43	N 69° 50' 03" W	50.56'	
43-44	S 40° 08' 12" W	71.00'	
44-45	S 72° 35' 30" W	66.91'	
45-46	N 63° 36' 31" W	98.77'	
46-47	N 0° 28' 56" E	83.76'	
47-48	N 7° 14' 23" W	105.90'	
48-49	S 82° 32' 54" W	164.45'	
49-50	N 9° 33' 36" W	170.05'	

BOUNDARY DATA			
CORNER	BEARING	DISTANCE	
50-51	N 81° 14' 33" W	148.19'	
51-52	N 43° 01' 40" W	112.56'	
52-53	N 59° 39' 19" W	186.44'	
53-54	N 9° 35' 25" E	62.72'	
54-55	N 13° 31' 46" E	70.02'	
55-56	N 89° 32' 56" E	170.83'	
56-57	S 47° 44' 09" E	44.15'	
57-58	S 84° 02' 33" E	86.17'	
58-59	N 69° 13' 42" E	110.94'	
59-60	N 42° 32' 33" E	154.35'	
60-61	N 55° 22' 06" E	73.01'	
61-62	N 24° 22' 15" E	76.05'	
62-63	N 10° 38' 27" W	89.94'	
63-64	N 24° 58' 53" E	53.30'	
64-65	N 14° 57' 47" E	65.20'	
65-66	N 33° 18' 02" W	91.61'	
66-67	N 53° 53' 09" E	91.56'	
67-68	S 78° 53' 24" E	111.89'	
68-69	S 34° 09' 57" E	138.40'	
69-70	S 65° 23' 04" E	120.15'	
70-71	S 41° 08' 14" E	213.18'	
71-72	S 7° 28' 35" E	71.42'	
72-73	S 22° 42' 27" W	70.74'	
73-74	N 72° 47' 29" E	116.54'	
74-75	S 89° 53' 34" E	69.65'	
75-76	S 47° 16' 52" E	161.44'	
76-77	S 31° 43' 40" E	127.62'	
77-78	S 56° 11' 21" E	91.04'	
78-79	S 52° 00' 00" E	205.07'	
79-80	S 26° 08' 00" W	158.03'	

CURVE TABLE					
NAME	ANGLE	RADIUS	LENGTH	BEARING	CHORD
C-1	80°33'53"	25.00	35.15	S 53°35'03" E	32.33
C-2	80°33'53"	25.00	35.15	N 45°51'04" E	32.33
C-3	24°48'00"	325.00	140.67	N 73°44'00" E	139.58
C-4	18°30'39"	325.00	105.00	N 76°52'40" E	104.54
C-5	06°17'21"	325.00	35.67	N 64°28'40" E	35.66
C-6	24°48'00"	325.00	161.32	N 73°44'00" E	161.05
C-7	09°03'46"	375.00	59.32	N 81°36'07" E	59.25
C-8	15°44'14"	375.00	103.00	N 69°12'07" E	102.68
C-9	75°31'21"	25.00	32.85	S 80°54'19" E	30.62
C-10	255°31'21"	55.00	245.28	N 09°05'41" E	86.96
C-11	24°35'00"	55.00	23.60	N 73°37'30" E	23.42
C-12	31°15'00"	55.00	30.00	S 78°27'30" W	29.63
C-13	39°30'00"	55.00	37.92	S 43°05'00" W	37.17
C-14	44°30'00"	55.00	42.72	N 01°05'00" W	41.65
C-15	56°17'00"	55.00	54.02	N 49°18'30" E	51.88
C-16	59°24'21"	55.00	57.02	S 72°50'50" W	54.51
C-17	13°18'53"	280.00	64.90	S 19°56'34" E	64.76
C-18	18°52'14"	280.00	92.22	N 03°52'00" W	91.80
C-19	25°45'53"	280.00	125.91	N 18°27'04" E	124.85
C-20	57°55'00"	280.00	283.03	N 02°22'30" E	271.14
C-21	11°20'00"	350.00	69.23	S 20°55'00" W	69.12
C-22	90°00'00"	25.00	39.27	S 60°15'00" E	35.36
C-23	90°00'00"	25.00	39.27	N 29°45'00" W	35.36
C-24	56°25'00"	200.00	196.93	N 46°32'30" E	189.07
C-25	56°25'00"	200.00	246.16	N 46°32'30" E	236.34
C-26	27°10'00"	250.00	118.54	N 31°55'00" E	117.43
C-27	23°19'52"	250.00	101.80	N 29°59'58" E	101.10
C-28	03°50'08"	250.00	16.74	N 43°34'56" E	16.73
C-29	27°10'00"	200.00	94.83	N 31°55'00" E	93.94
C-30	22°17'47"	200.00	77.83	N 29°28'53" E	77.34
C-31	04°52'13"	200.00	17.00	N 43°03'54" E	17.00
C-32	77°40'00"	400.00	542.22	N 84°20'00" E	501.65
C-33	10°48'13"	400.00	75.42	N 50°54'08" E	75.31
C-34	15°02'18"	400.00	104.99	N 63°49'21" E	104.69
C-35	14°19'28"	400.00	100.00	N 78°30'13" E	99.74
C-36	17°50'52"	400.00	124.60	S 85°24'38" E	124.10
C-37	16°29'11"	400.00	115.10	S 88°14'38" E	114.70
C-38	03°10'00"	400.00	22.11	S 58°25'00" E	22.10
C-39	77°40'00"	350.00	474.44	N 84°20'00" E	438.94
C-40	16°22'00"	350.00	99.98	N 53°41'00" E	99.64
C-41	20°27'46"	350.00	125.00	N 72°05'53" E	124.34
C-42	20°27'46"	350.00	125.00	S 87°26'21" E	124.34
C-43	20°22'28"	350.00	124.46	S 67°01'14" E	123.81



LOT AREA		
LOT	SQUARE FEET	ACREAGE
95	20,343	0.47
96	16,203	0.42
97	20,975	0.48
98	18,953	0.44
99	25,614	0.59
100	21,995	0.51
101	17,679	0.41
102	21,200	0.49
103	38,148	0.88
104	24,207	0.56
105	20,609	0.48
106	18,727	0.43
107	19,808	0.45
108	15,857	0.36
109	15,890	0.36
110	18,274	0.42
111	20,665	0.47
112	21,246	0.49
113	23,926	0.55
114	19,093	0.44
170	17,612	0.40
171		
172	29,151	0.67
173	36,274	0.83
174	41,463	0.95
175	15,247	0.35
176	15,000	0.34
177	15,000	0.34
178	15,003	0.34
179	15,865	0.36

LEGEND

M.B.L. MINIMUM BUILDING LINE

P.U.E. PUBLIC UTILITY EASEMENT

D.E. DRAINAGE EASEMENT

[Symbol] PROPOSED DWELLING

**DRAIN FIELD LOCATIONS**

PLAT SHOWING  
SECTION No. 2  
**THE WATERS EDGE**  
UNION HALL MAGISTERIAL DISTRICT  
FRANKLIN COUNTY, VIRGINIA

PROPERTY OF  
WILLARD CONSTRUCTION OF ROANOKE VALLEY, INC.  
SCALE: 1"=100'  
DATE: 24 JUNE 2008

BUFORD T. LUMSDEN & ASSOCIATES, P.C.  
ENGINEERS - SURVEYORS  
ROANOKE, VIRGINIA

SHEET

