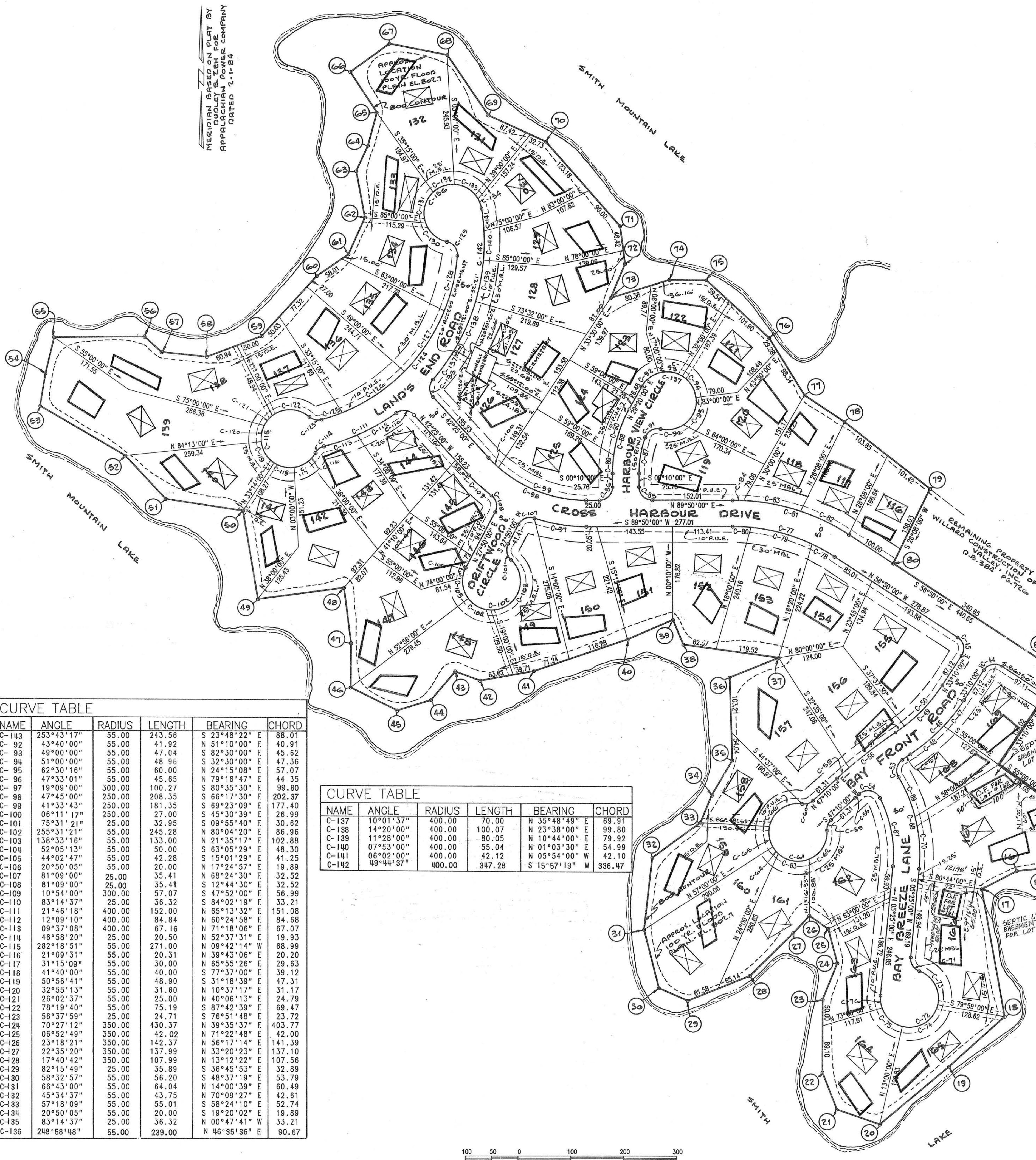


MEASUREMENT BASED ON PLAT BY  
CUDLEY & CHER FOR THE COMPANY  
DATED 2-1-84



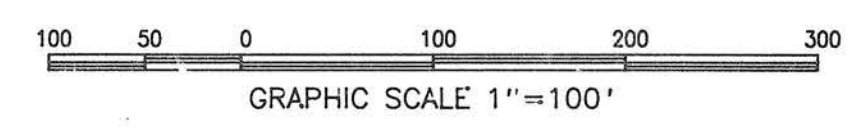
LOT AREA					
LOT	SQUARE FEET	ACREAGE	LOT	SQUARE FEET	ACREAGE
116	16,111	0.37	143	19,408	0.45
117	17,788	0.41	144	18,231	0.42
118	20,143	0.46	145	15,484	0.36
119	25,569	0.59	146	15,057	0.35
120	23,813	0.55	147	28,837	0.66
121	17,696	0.41	148	39,743	0.91
122	19,490	0.48	149	23,671	0.54
123	20,263	0.47	150	27,691	0.64
124	17,112	0.39	151	22,943	0.53
125	23,826	0.55	152	25,853	0.59
126	23,561	0.51	153	28,019	0.64
127	25,486	0.56	154	21,539	0.50
128	28,040	0.64	155	33,627	0.77
129	23,652	0.54	156	26,476	0.61
130	20,376	0.47	157	34,683	0.80
131	19,033	0.44	158	16,388	0.38
132	32,401	0.74	159	24,445	0.56
133	17,809	0.41	160	34,170	0.78
134	23,075	0.53	161	19,097	0.44
135	25,810	0.59	162	29,992	0.69
136	25,527	0.59	163	20,233	0.46
137	19,094	0.44	164	23,790	0.55
138	33,404	0.77	165	20,516	0.47
139	41,243	0.95	166	32,643	0.75
140	23,745	0.55	167	43,384	1.00
141	17,446	0.40	168	16,587	0.38
142	27,177	0.62	169	19,159	0.44

LEGEND  
M.B.L. MINIMUM BUILDING LINE  
D.E. DRAINAGE EASEMENT  
P.U.E. PUBLIC UTILITY EASEMENT  
 PROPOSED DWELLING

CURVE TABLE					
NAME	ANGLE	RADIUS	LENGTH	BEARING	CHORD
C-44	90°00'00"	25.00	39.27	N 78°10'00" E	35.36
C-45	90°00'00"	25.00	39.27	S 11°50'00" E	35.36
C-46	23°00'00"	364.47	148.31	N 44°40'00" E	145.33
C-47	09°55'25"	364.47	63.13	N 38°07'42" E	83.05
C-48	13°04'35"	364.47	83.18	N 49°37'42" E	83.00
C-49	23°00'00"	314.47	126.24	N 44°40'00" E	125.39
C-50	19°12'28"	314.47	105.42	N 42°46'14" E	104.93
C-51	03°47'32"	314.47	20.82	N 54°16'15" E	20.81
C-52	01°13'46"	852.57	18.29	N 55°33'07" E	18.29
C-53	85°41'19"	25.00	37.39	N 12°05'35" E	34.00
C-54	105°04'47"	25.00	45.85	S 79°32'50" E	39.69
C-55	00°44'48"	852.57	11.10	N 47°32'22" E	11.10
C-56	09°00'00"	902.57	141.78	N 51°40'00" E	141.63
C-57	07°02'14"	902.57	110.86	N 52°38'53" E	110.78
C-58	01°57'46"	902.57	30.92	N 48°08'53" E	30.92
C-59	51°19'04"	25.00	22.39	N 21°30'28" E	21.65
C-60	51°19'04"	25.00	22.39	N 72°49'32" E	21.65
C-61	282°38'08"	55.00	271.31	S 42°50'00" E	68.75
C-62	73°48'59"	55.00	70.86	N 32°45'26" E	66.06
C-63	62°43'50"	55.00	60.22	S 78°58'10" E	57.25
C-64	17°37'44"	55.00	16.92	S 38°47'23" E	16.86
C-65	32°25'27"	236.38	133.77	S 10°47'43" E	131.99
C-66	36°10'05"	286.38	180.78	S 12°40'02" E	177.79
C-67	16°19'08"	286.38	81.57	S 22°35'31" E	81.29
C-68	19°50'57"	286.38	99.21	S 04°30'28" E	98.72
C-69	75°31'21"	25.00	32.95	S 32°20'41" E	30.62
C-70	255°31'21"	55.00	245.28	N 57°39'19" E	86.96
C-71	82°37'59"	55.00	79.32	S 28°47'21" E	72.62
C-72	91°13'20"	55.00	87.56	N 58°08'18" E	78.61
C-73	56°47'36"	55.00	54.32	S 47°51'14" E	52.31
C-74	24°52'26"	55.00	23.88	S 07°01'13" E	23.69
C-75	33°20'00"	350.00	203.82	S 73°30'00" E	200.76
C-76	07°55'50"	350.00	48.44	S 60°47'55" E	48.41
C-77	19°40'24"	350.00	120.18	S 74°36'02" E	119.59
C-78	05°43'46"	350.00	35.00	S 87°18'07" E	34.98
C-79	33°20'00"	400.00	232.71	S 73°30'00" E	229.44
C-80	14°34'09"	400.00	101.71	S 64°07'04" E	101.44
C-81	15°45'46"	400.00	110.05	S 78°17'02" E	109.70
C-82	03°00'00"	400.00	20.95	S 88°39'58" E	20.95
C-83	90°00'00"	25.00	39.27	S 45°10'00" E	35.36
C-84	90°00'00"	25.00	39.27	N 44°50'00" E	35.36
C-85	19°57'04"	200.00	69.64	N 09°48'32" E	69.29
C-86	29°30'00"	250.00	128.72	N 14°35'00" E	127.30
C-87	08°01'17"	250.00	35.00	N 03°50'38" E	34.97
C-88	21°28'43"	250.00	93.72	N 18°35'38" E	93.17
C-89	83°16'13"	25.00	36.33	S 61°25'11" W	33.22
C-90	41°21'30"	55.00	39.70	S 9°17'46" E	38.85
C-91	87°06'05"	55.00	83.61	S 54°56'01" W	75.79

CURVE TABLE					
NAME	ANGLE	RADIUS	LENGTH	BEARING	CHORD
C-143	253°43'17"	55.00	243.56	S 23°48'22" E	88.01
C-92	43°40'00"	55.00	41.92	N 51°10'00" E	40.91
C-93	49°00'00"	55.00	47.04	S 82°30'00" E	45.62
C-94	51°00'00"	55.00	48.96	S 32°30'00" E	47.36
C-95	62°30'16"	55.00	60.00	N 24°15'08" E	57.07
C-96	47°33'01"	55.00	45.65	N 79°16'47" E	44.35
C-97	19°09'00"	300.00	100.27	S 80°35'30" E	99.80
C-98	47°45'00"	250.00	208.35	S 66°17'30" E	202.37
C-99	41°33'43"	250.00	181.35	S 69°23'09" E	177.40
C-100	06°11'17"	250.00	27.00	S 45°30'39" E	26.99
C-101	75°31'21"	25.00	32.95	S 09°55'40" E	30.62
C-102	255°31'21"	55.00	245.28	N 80°04'20" E	86.96
C-103	138°33'16"	55.00	133.00	N 21°35'17" E	102.88
C-104	52°05'13"	55.00	50.00	S 83°05'29" E	48.30
C-105	44°02'47"	55.00	42.28	S 15°01'29" E	41.25
C-106	20°50'05"	55.00	20.00	N 17°24'57" E	19.89
C-107	81°09'00"	25.00	35.41	N 68°24'30" E	32.52
C-108	81°09'00"	25.00	35.41	S 12°44'30" E	32.52
C-109	10°54'00"	300.00	57.07	S 47°52'00" E	56.99
C-110	83°14'37"	25.00	36.32	S 84°02'19" E	33.21
C-111	21°46'18"	400.00	152.00	N 65°13'32" E	151.08
C-112	12°09'18"	400.00	84.84	N 60°24'58" E	84.88
C-113	09°37'08"	400.00	67.16	N 71°18'08" E	67.07
C-114	46°58'20"	25.00	20.50	N 52°37'31" E	19.93
C-115	282°18'51"	55.00	271.00	N 09°42'14" W	68.99
C-116	21°09'31"	55.00	20.31	N 39°43'06" E	20.20
C-117	31°15'09"	55.00	30.00	N 65°55'26" E	29.63
C-118	41°40'00"	55.00	40.00	S 77°37'00" E	39.12
C-119	50°56'41"	55.00	48.90	S 31°18'39" E	47.31
C-120	32°55'13"	55.00	31.60	N 10°37'17" E	31.17
C-121	26°02'37"	55.00	25.79	N 40°08'13" E	24.79
C-122	78°19'40"	55.00	75.19	S 87°42'39" E	69.47
C-123	58°37'59"	25.00	24.71	S 78°51'48" E	23.72
C-124	70°27'12"	350.00	430.37	N 39°35'37" E	403.77
C-125	06°52'49"	350.00	42.02	N 71°22'48" E	42.00
C-126	23°18'21"	350.00	142.37	N 56°17'14" W	141.39
C-127	22°35'20"	350.00	137.99	N 33°20'23" E	137.10
C-128	17°40'42"	350.00	107.99	N 13°12'22" E	107.56
C-129	82°15'49"	25.00	35.89	S 36°45'53" E	32.89
C-130	58°32'57"	55.00	56.20	S 48°37'19" E	53.79
C-131	68°43'00"	55.00	64.04	N 14°00'39" E	60.49
C-132	45°34'37"	55.00	43.75	N 70°09'27" E	42.61
C-133	57°18'09"	55.00	55.01	S 58°24'10" E	52.74
C-134	20°50'05"	55.00	20.00	S 19°20'02" E	19.89
C-135	83°14'37"	25.00	36.32	N 00°47'41" W	33.21
C-136	248°58'48"	55.00	239.00	N 46°35'36" E	90.67

CURVE TABLE					
NAME	ANGLE	RADIUS	LENGTH	BEARING	CHORD
C-137	10°01'37"	400.00	70.00	N 35°48'48" E	69.91
C-138	14°20'00"	400.00	100.07	N 23°36'00" E	99.80
C-139	11°28'00"	400.00	80.05	N 10°44'00" E	79.92
C-140	07°53'00"	400.00	55.04	N 01°03'30" E	54.99
C-141	06°02'00"	400.00	42.12	N 05°54'00" W	42.10
C-142	49°44'37"	400.00	347.28	S 15°57'19" W	336.47



**DRAIN FIELD LOCATIONS**

PLAT SHOWING  
SECTION No. 2  
**THE WATERS**  
UNION HALL MAGISTERIA  
FRANKLIN COUNTY,  
PROPERTY OF  
WILLARD CONSTRUCTION OF ROANOK  
SCALE: 1"=100' DATE

BUFORD T. LUMSDEN & ASSOCIATES, P  
ENGINEERS - SURVEYORS  
ROANOK, VIRGINIA