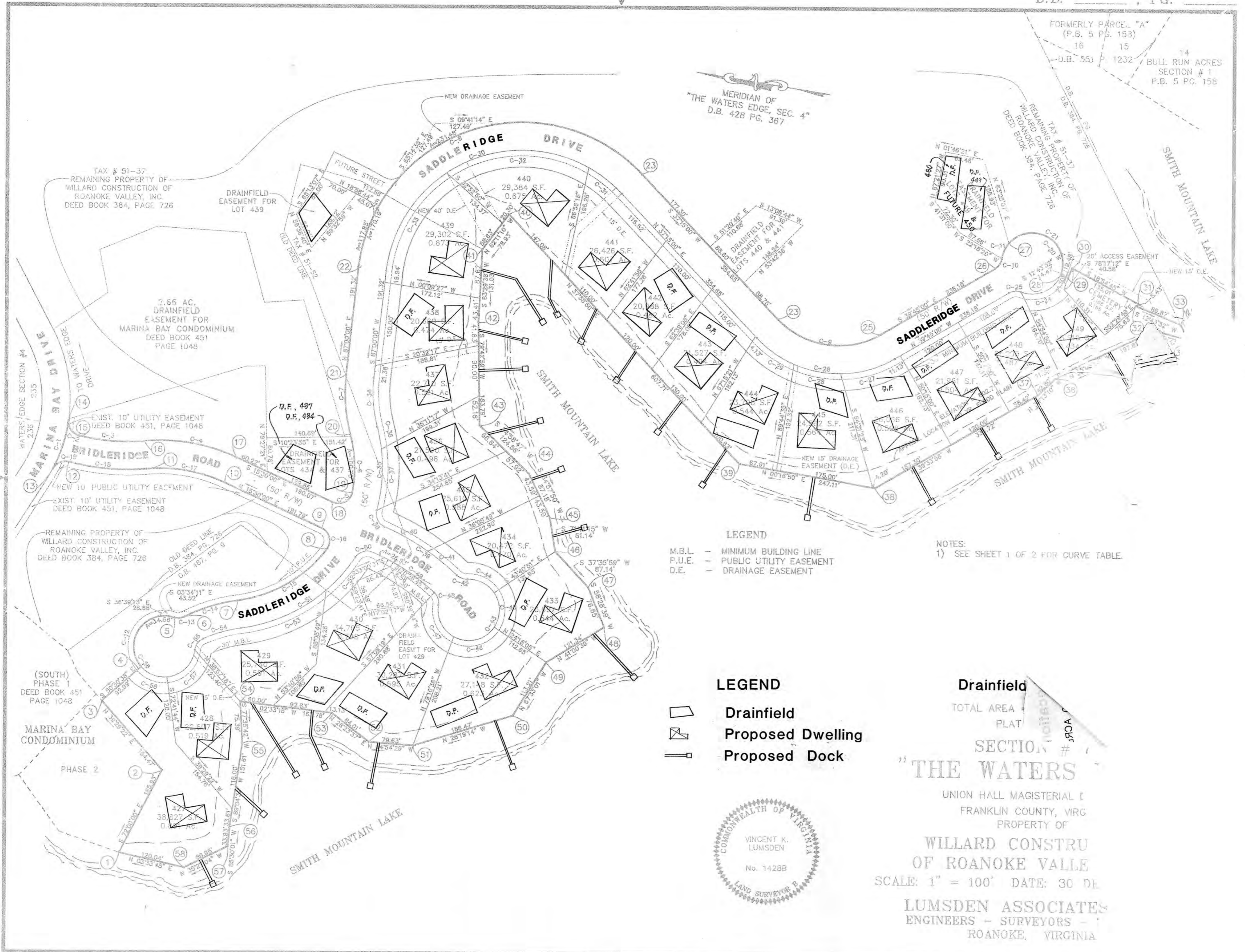


FORMERLY PARCEL "A"
(P.B. 5 P.G. 153)
16 15
D.B. 353 P. 1232 14
BULL RUN ACRES
SECTION # 1
P.B. 5 PG. 158

MERIDIAN OF
"THE WATERS EDGE, SEC. 4"
D.B. 428 PG. 367



TAX # 51-37
REMAINING PROPERTY OF
WILLARD CONSTRUCTION OF
ROANOKE VALLEY, INC.
DEED BOOK 384, PAGE 726

DRAINFIELD
EASEMENT FOR
LOT 439

2.66 AC.
DRAINFIELD
EASEMENT FOR
MARINA BAY CONDOMINIUM
DEED BOOK 451
PAGE 1048

EXIST. 10' UTILITY EASEMENT
DEED BOOK 451, PAGE 1048

NEW 10' PUBLIC UTILITY EASEMENT
EXIST. 10' UTILITY EASEMENT
DEED BOOK 451, PAGE 1048

REMAINING PROPERTY OF
WILLARD CONSTRUCTION OF
ROANOKE VALLEY, INC.
DEED BOOK 384, PAGE 726

NEW DRAINAGE EASEMENT
D.B. 487, PG. 9

(SOUTH)
PHASE 1
DEED BOOK 451
PAGE 1048

MARINA BAY
CONDOMINIUM

PHASE 2

LEGEND

- M.B.L. - MINIMUM BUILDING LINE
- P.U.E. - PUBLIC UTILITY EASEMENT
- D.E. - DRAINAGE EASEMENT

NOTES:

- 1) SEE SHEET 1 OF 2 FOR CURVE TABLE.

LEGEND

- Drainfield
- Proposed Dwelling
- Proposed Dock

Drainfield

TOTAL AREA
PLAT

SECTION #

"THE WATERS"

UNION HALL MAGISTERIAL
FRANKLIN COUNTY, VIRG
PROPERTY OF

WILLARD CONSTRU
OF ROANOKE VALLE

SCALE: 1" = 100' DATE: 30 DE

LUMSDEN ASSOCIATES
ENGINEERS - SURVEYORS -
ROANOKE, VIRGINIA

