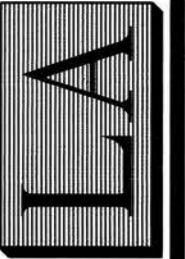


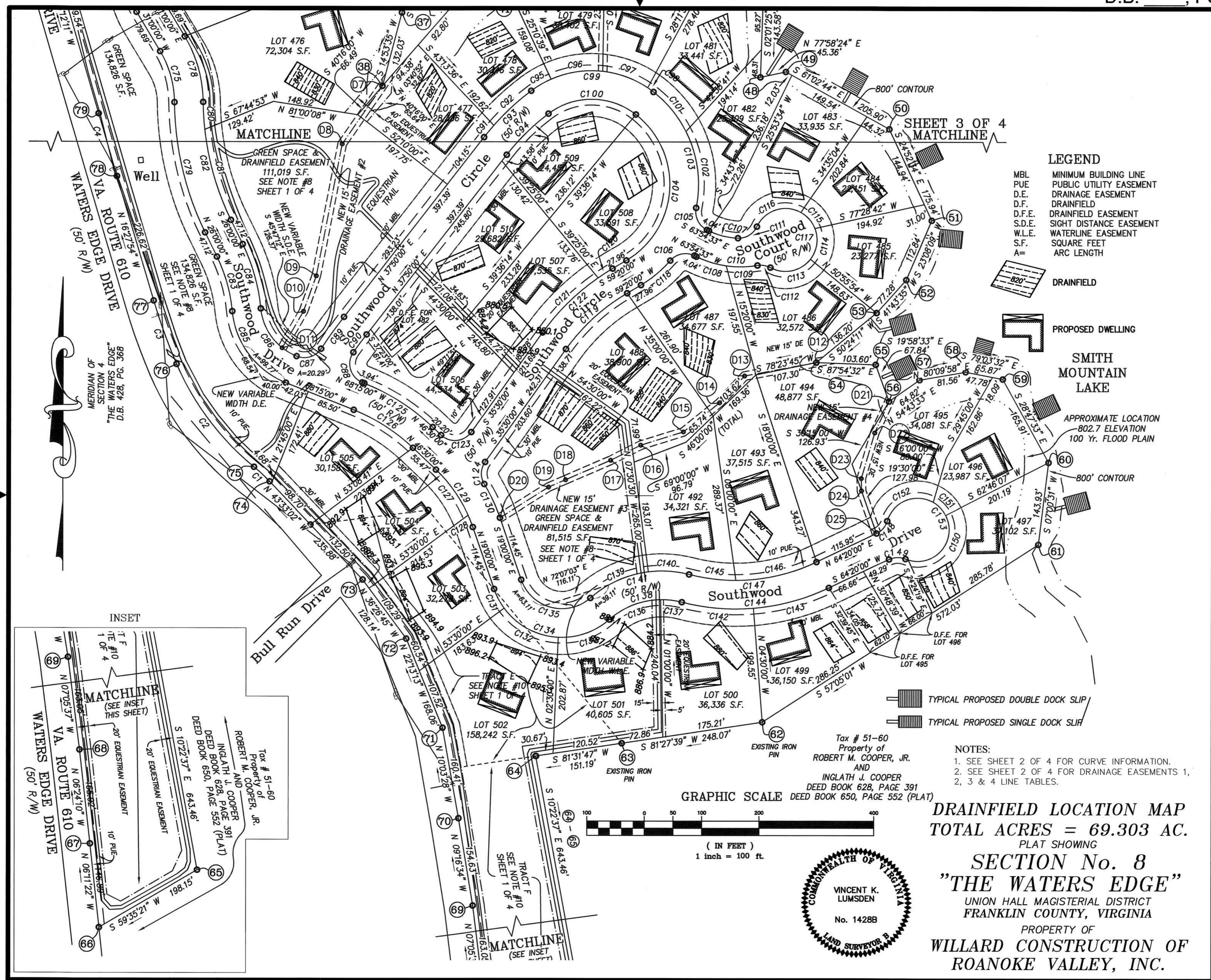
PHONE: (540) 774-4411  
FAX: (540) 772-9445  
E-MAIL: MAIL@LUMSDENPC.COM

4664 BRAMBLETON AVENUE, SW  
P.O. BOX 20669  
ROANOKE, VIRGINIA 24018

LUMSDEN ASSOCIATES, P.C.  
ENGINEERS-SURVEYORS-PLANNERS  
ROANOKE, VIRGINIA



DATE: AUGUST 29, 2002  
COMM. NO.: 02-022  
SCALE: 1" = 100'  
CADD FILE: F:\2002\02022\SUR\02022R2.DWG

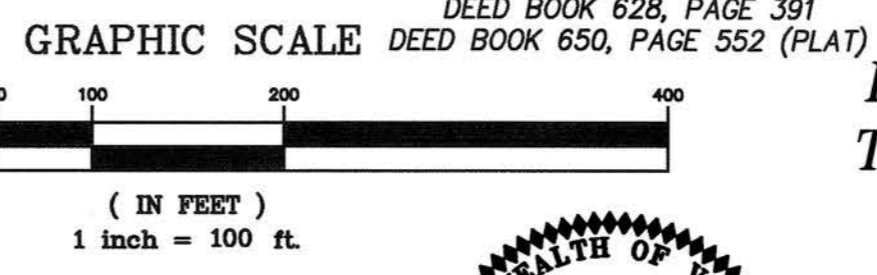


- LEGEND**
- MBL MINIMUM BUILDING LINE
  - PUE PUBLIC UTILITY EASEMENT
  - D.E. DRAINAGE EASEMENT
  - D.F. DRAINFIELD
  - D.F.E. DRAINFIELD EASEMENT
  - S.D.E. SIGHT DISTANCE EASEMENT
  - W.L.E. WATERLINE EASEMENT
  - S.F. SQUARE FEET
  - A= ARC LENGTH

- DRAINFIELD
- PROPOSED DWELLING
- SMITH MOUNTAIN LAKE**
- APPROXIMATE LOCATION  
802.7 ELEVATION  
100 Yr. FLOOD PLAIN
- 800' CONTOUR

- TYPICAL PROPOSED DOUBLE DOCK SLIP
- TYPICAL PROPOSED SINGLE DOCK SLIP

**NOTES:**  
1. SEE SHEET 2 OF 4 FOR CURVE INFORMATION.  
2. SEE SHEET 2 OF 4 FOR DRAINAGE EASEMENTS 1, 2, 3 & 4 LINE TABLES.



**DRAINFIELD LOCATION MAP**  
**TOTAL ACRES = 69.303 AC.**  
PLAT SHOWING  
**SECTION No. 8**  
**"THE WATERS EDGE"**  
UNION HALL MAGISTERIAL DISTRICT  
FRANKLIN COUNTY, VIRGINIA  
PROPERTY OF  
**WILLARD CONSTRUCTION OF**  
**ROANOKE VALLEY, INC.**

MERIDIAN OF SECTION 4  
"THE WATERS EDGE"  
D.B. 428, PG. 368

INSET

