

**DRAINFIELD LOCATION MAP**  
**TOTAL ACRES = 69.303 AC.**  
 PLAT SHOWING  
**SECTION No. 8**  
**"THE WATERS EDGE"**  
 UNION HALL MAGISTERIAL DISTRICT  
 FRANKLIN COUNTY, VIRGINIA  
 PROPERTY OF  
**WILLARD CONSTRUCTION OF**  
**ROANOKE VALLEY, INC.**

**WATERS EDGE**  
**SECTION 6**  
 D.B. 437, PG. 315

**SMITH MOUNTAIN LAKE**

APPROXIMATE LOCATION  
 802.7 ELEVATION  
 100 Yr. FLOOD PLAIN



Lot # 51-37  
 Remaining Property of  
 Willard Construction of  
 Roanoke Valley, Inc.  
 DEED BOOK 384, PAGE 726

Hole # 4  
 WATERS EDGE  
 GOLF COURSE

VA. ROUTE 610

NEW 15' DRAINAGE EASEMENT #5

**LEGEND**

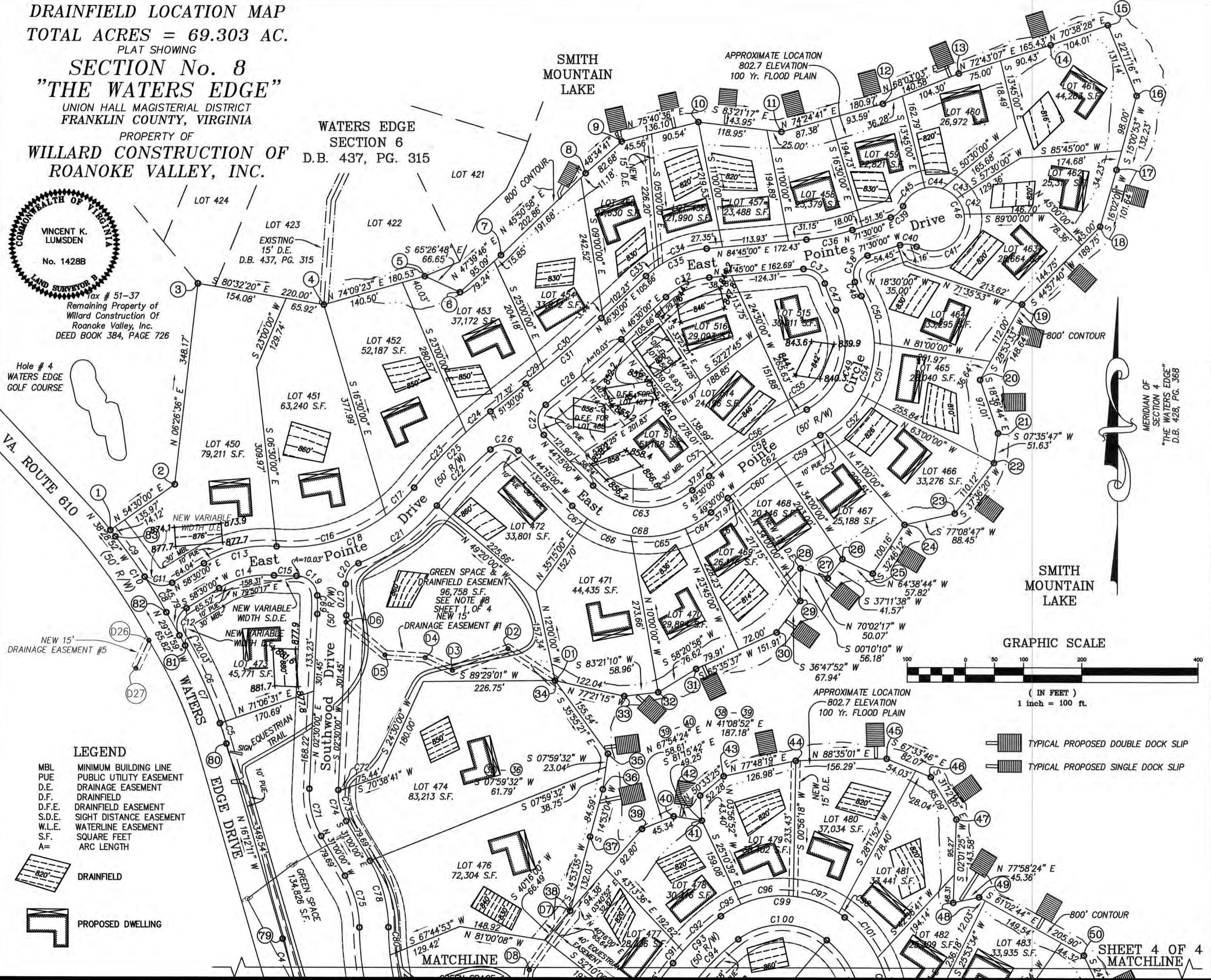
- MBL MINIMUM BUILDING LINE
- PUE PUBLIC UTILITY EASEMENT
- D.E. DRAINAGE EASEMENT
- D.F. DRAINFIELD
- D.F.E. DRAINFIELD EASEMENT
- S.D.E. SIGHT DISTANCE EASEMENT
- W.L.E. WATERLINE EASEMENT
- S.F. SQUARE FEET
- A= ARC LENGTH



DRAINFIELD



PROPOSED DWELLING



MERIDIAN OF SECTION 4  
 "THE WATERS EDGE"  
 D.B. 428, PG. 368

**GRAPHIC SCALE**



( IN FEET )  
 1 inch = 100 ft.

- TYPICAL PROPOSED DOUBLE DOCK SLIP
- TYPICAL PROPOSED SINGLE DOCK SLIP

APPROXIMATE LOCATION  
 802.7 ELEVATION  
 100 Yr. FLOOD PLAIN

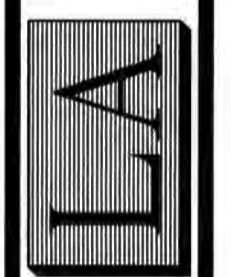
MATCHLINE (D8)

SHEET 4 OF 4  
 MATCHLINE

PHONE: (540) 774-4411  
 FAX: (540) 772-9445  
 E-MAIL: MAIL@LUMSDENPC.COM

4664 BRAMBLETON AVENUE, SW  
 P.O. BOX 20669  
 ROANOKE, VIRGINIA 24018

**LUMSDEN ASSOCIATES, P.C.**  
 ENGINEERS-SURVEYORS-PLANNERS  
 ROANOKE, VIRGINIA



DATE: AUGUST 29, 2002  
 COMM. NO.: 02-022  
 SCALE: 1" = 100'  
 CADD FILE: F:\2002\02022\SUR\02022RFP.DWG  
 SHEET 3 OF 4